

## S.C. Brake Motor 180W (□ 90mm)

# 180W Speed Control Brake Motor 180W (□ 90mm)

S.C. Brake Motor 180W (□ 90mm)

### Motor 사양

Model 9SBDG*-180F2 □ : Gear Type Shaft 9SBDG*-180F2 □ : D-Cut Type Shaft 9SBDK*-180F2 □ : Key Type Shaft	Output W	Voltage V	Frequency Hz	Poles	Duty	Speed Range r/min	Starting Torque		Permissible Torque				Capacitor μF / VAC
									1200r/min		90r/min		
									kgfcm	N.m	kgfcm	N.m	
9SBDG1(A)-180F2 □	180	1φ110	60	4	30min.	90-1700	6.40	0.640	10.00	1.000	3.00	0.300	30.0 / 250
9SBDG2(D)-180F2 □	180	1φ220	60	4	30min.	90-1700	6.40	0.640	10.00	1.000	3.00	0.300	8.0 / 450
9SBDGE-180F2 □	180	1φ220	50	4	30min.	90-1400	6.40	0.640	10.00	1.000	3.00	0.300	8.0 / 450
		1φ240					7.00	0.700	11.00	1.100	3.30	0.330	

- 1) 모터 모델명 \* 자리에는 전압코드가, □ 안에는 부착되는 감속기의 모델 타입명이 들어갑니다.
- 2) 전압코드 A, D, E는 TP(Thermal Protector) 부착 사양입니다.
- 3) Gear Type Shaft는 감속기 부착용이며 D-Cut 및 Key Type Shaft는 모터 단독 사용시의 출력축입니다.

### 감속기 부착 시 최대허용토크

Motor Model	Gearbox Model	회전속도 r/min	전압 V	주파수 Hz	감속비	3	3.6	5	6	7.5	9	10	12.5	15	18	20	25
9SBDG*-180F2H	9HBK □ BH 9HFK □ BH	1200	110	60	kgfcm	24.3	29.2	40.5	48.6	60.8	72.9	81.0	91.3	109.5	131.4	146.0	165.0
					N.m	2.38	2.86	3.97	4.76	5.95	7.14	7.94	8.94	10.73	12.88	14.31	16.17
					kgfcm	24.3	29.2	40.5	48.6	60.8	72.9	81.0	91.3	109.5	131.4	146.0	165.0
		N.m	2.38	2.86	3.97	4.76	5.95	7.14	7.94	8.94	10.73	12.88	14.31	16.17			
		90	110	60	kgfcm	7.3	8.7	12.2	14.6	18.2	21.9	24.3	27.4	32.9	39.4	43.8	49.5
					N.m	0.71	0.86	1.19	1.43	1.79	2.14	2.38	2.68	3.22	3.86	4.29	4.85
kgfcm	7.3				8.7	12.2	14.6	18.2	21.9	24.3	27.4	32.9	39.4	43.8	49.5		
N.m	0.71	0.86	1.19	1.43	1.79	2.14	2.38	2.68	3.22	3.86	4.29	4.85					
90	220	60	kgfcm	7.3	8.7	12.2	14.6	18.2	21.9	24.3	27.4	32.9	39.4	43.8	49.5		
			N.m	0.71	0.86	1.19	1.43	1.79	2.14	2.38	2.68	3.22	3.86	4.29	4.85		
			kgfcm	7.3	8.7	12.2	14.6	18.2	21.9	24.3	27.4	32.9	39.4	43.8	49.5		
N.m	0.71	0.86	1.19	1.43	1.79	2.14	2.38	2.68	3.22	3.86	4.29	4.85					

Motor Model	Gearbox Model	회전속도 r/min	전압 V	주파수 Hz	감속비	30	36	40	50	60	75	90	100	120	150	180	200			
9SBDG*-180F2H	9HBK □ BH 9HFK □ BH	1200	110	60	kgfcm	198.0	237.6	264.0	300.0	300.0	300.0	300.0	300.0	300.0	300.0	300.0	300.0	300.0		
					N.m	19.40	23.28	25.87	29.40	29.40	29.40	29.40	29.40	29.40	29.40	29.40	29.40	29.40	29.40	29.40
					kgfcm	198.0	237.6	264.0	300.0	300.0	300.0	300.0	300.0	300.0	300.0	300.0	300.0	300.0	300.0	300.0
		N.m	19.40	23.28	25.87	29.40	29.40	29.40	29.40	29.40	29.40	29.40	29.40	29.40	29.40	29.40	29.40	29.40		
		90	110	60	kgfcm	59.4	71.3	79.2	99.0	118.8	132.8	159.3	177.0	212.4	265.5	300.0	300.0			
					N.m	5.82	6.99	7.76	9.70	11.64	13.01	15.61	17.35	20.82	26.02	29.40	29.40			
kgfcm	59.4				71.3	79.2	99.0	118.8	132.8	159.3	177.0	212.4	265.5	300.0	300.0					
N.m	5.82	6.99	7.76	9.70	11.64	13.01	15.61	17.35	20.82	26.02	29.40	29.40								
90	220	60	kgfcm	59.4	71.3	79.2	99.0	118.8	132.8	159.3	177.0	212.4	265.5	300.0	300.0					
			N.m	5.82	6.99	7.76	9.70	11.64	13.01	15.61	17.35	20.82	26.02	29.40	29.40					
			kgfcm	59.4	71.3	79.2	99.0	118.8	132.8	159.3	177.0	212.4	265.5	300.0	300.0					
N.m	5.82	6.99	7.76	9.70	11.64	13.01	15.61	17.35	20.82	26.02	29.40	29.40								

- 1) 모터 모델명 □ 안에는 전압코드가 들어갑니다.
- 2) 감속기 모델명 □ 안에는 감속비가 들어갑니다.
- 3) 위의 표에서 색칠된 범위의 감속비를 선택했을 때 감속기의 출력축은 모터의 출력축과 같은 방향으로 회전합니다. 흰색 바탕 범위의 감속비에서는 감속기 출력축은 모터 출력축의 회전방향과 반대방향으로 회전합니다.
- 4) 회전속도(r/min)는 모터의 동기회전속도(50Hz:1500r/min, 60Hz:1800r/min)를 감속비로 나누어 계산합니다. 실제 회전속도는 부하의 크기에 따라 표시보다 2~20% 정도 느립니다.

# B AC Motors

S.C. Brake Motor 180W (□ 90mm)

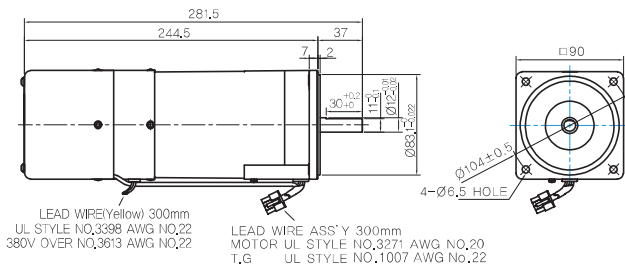
## 감속기 부착 시 최대허용토크

Motor Model	Gearbox Model	회전속도 r/min	전압 V	주파수 Hz	감속비	5	7.5	10	15	20	25	30	40	50	60	80	100			
9SBDG*~180F2WH	9WHD □-030	1200	110	60	kgfcm	34.8	50.4	64.8	91.2	115.2	132.0	153.6	183.7	173.5	163.3	132.7	-			
					N.m	3.41	4.94	6.35	8.94	11.29	12.94	15.05	18.00	17.00	16.00	13.00	-	-		
						34.8	50.4	64.8	91.2	115.2	132.0	153.6	183.7	173.5	163.3	132.7	-	-		
		90	110	60	kgfcm	10.4	15.1	19.4	27.4	34.6	39.6	46.1	56.6	64.8	72.0	84.5	-	-		
					N.m	1.02	1.48	1.91	2.68	3.39	3.88	4.52	5.55	6.35	7.06	8.28	-	-		
						10.4	15.1	19.4	27.4	34.6	39.6	46.1	56.6	64.8	72.0	84.5	-	-		
		90	220/240	50	kgfcm	10.4	15.1	19.4	27.4	34.6	39.6	46.1	56.6	64.8	72.0	84.5	-	-		
					N.m	1.02	1.48	1.91	2.68	3.39	3.88	4.52	5.55	6.35	7.06	8.28	-	-		
						10.4	15.1	19.4	27.4	34.6	39.6	46.1	56.6	64.8	72.0	84.5	-	-		
9SBDG*~180F2WH	9WHD □-040	1200	110	60	kgfcm	-	-	-	-	-	-	-	-	244.0	273.6	295.0	270.0			
					N.m	-	-	-	-	-	-	-	-	-	-	23.91	26.81	28.91	26.46	
						-	-	-	-	-	-	-	-	-	-	244.0	273.6	295.0	270.0	
		90	110	60	kgfcm	-	-	-	-	-	-	-	-	-	-	73.2	82.1	97.9	112.8	
					N.m	-	-	-	-	-	-	-	-	-	-	-	7.17	8.04	9.60	11.05
						-	-	-	-	-	-	-	-	-	-	-	73.2	82.1	97.9	112.8
		90	220/240	50	kgfcm	-	-	-	-	-	-	-	-	-	-	73.2	82.1	97.9	112.8	
					N.m	-	-	-	-	-	-	-	-	-	-	-	7.17	8.04	9.60	11.05
						-	-	-	-	-	-	-	-	-	-	-	73.2	82.1	97.9	112.8

## Dimensions

### MOTOR ONLY

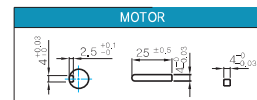
- MOTOR MODEL: 9SBDD□-180F2 (POWERFUL FAN)



### MOTOR OUTPUT SHAFT

MODEL	SPEC
D-CUT TYPE	
KEY TYPE	

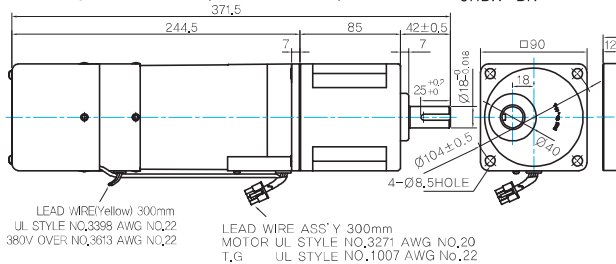
### KEY SPEC



### GEARED MOTOR

#### H TYPE GEARBOX

- MOTOR MODEL: 9SBDG□-180F2H (POWERFUL FAN)

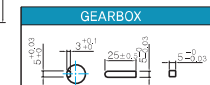


- GEARBOX MODEL: 9HBK□BH
- GEARBOX MODEL: 9HFK□BH

### GEARBOX OUTPUT SHAFT

MODEL	SPEC
KEY TYPE	
9HBK□BH	
9HFK□BH	

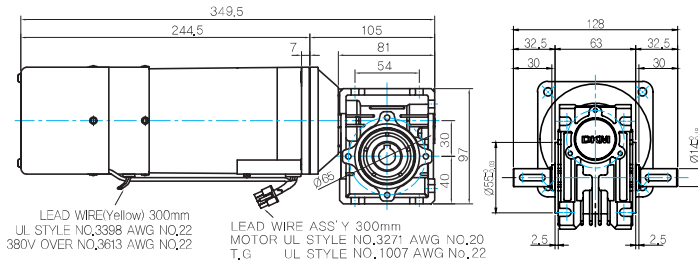
### KEY SPEC



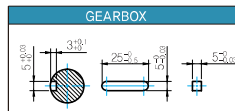
### WH TYPE GEARBOX

● MOTOR MODEL:  
9SBDG□-180F2WH (POWERFUL FAN)

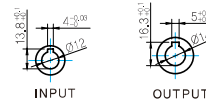
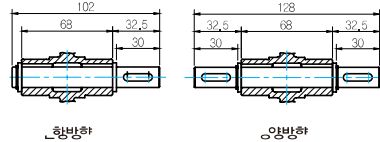
● GEARBOX MODEL:  
9WHD□-030



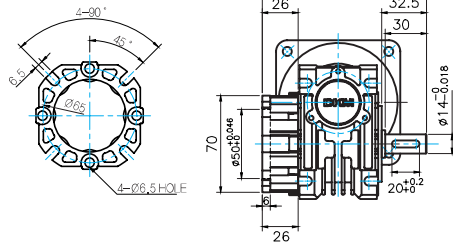
#### ● KEY SPEC



#### ● SHAFT

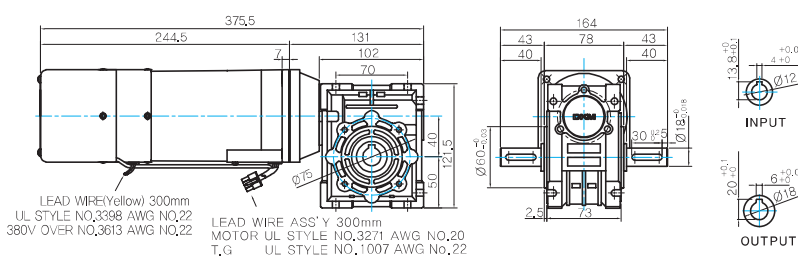


#### ● FLANGE

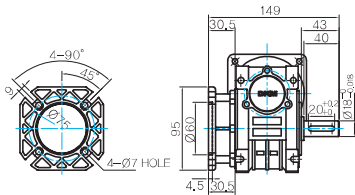


● MOTOR MODEL:  
9WHD□-180F2WH (POWERFUL FAN)

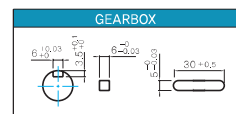
● GEARBOX MODEL:  
9WHD□-040



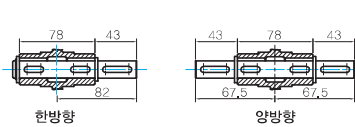
#### ● FLANGE



#### ● KEY SPEC



#### ● SHAFT



#### ● WEIGHT

PART	WEIGHT(Kg)
MOTOR	4.50
9HB(F)K3BH - 9HB(F)K10BH	1.62
9HB(F)K12.5BH - 9HB(F)K20BH	1.68
9HB(F)K25BH - 9HB(F)K60BH	1.73
9HB(F)K75BH - 9HB(F)K200BH	1.78
9WHD□-030	1.2
9WHD□-040	2.1
9XD10□	0.6

\* 출력 FLANGE와 SHAFT는 별매입니다.

# B AC Motors

S.C. Brake Motor 180W (□ 90mm)

## Motor Images

9SBDD □ -180F2	9SBDG □ -180F2H+9HBK □ BH	9SBDG □ -180F2H+9HFK □ BH	9SBDG □ -180F2WH+9WHD □ -030
